



#CW112 Junior Jacket



Fabric: Available in 65/35 Poly/Cotton

Buttons: Available in Plastic, cloth covered and hand-rolled

Sizes: 2-14

Embroidery/Screenprinting: Yes

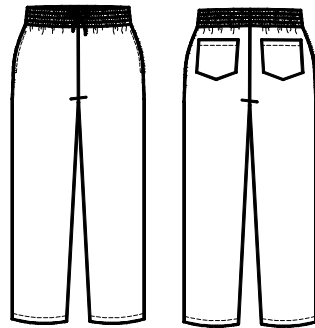
Custom Options: Please feel free to discuss with our sales team ...



Below Measurements allow for 4-5" of Ease								
	2	3	4	5	6	8	10	12
Collar	11	11 1/2	12	12 1/2	13	14	15	16
Chest	24	25	26	27	28	29	30	33
Waist	25	26	27	28	29	31	33	35
Bottom of Jacket	22/23	23/24	24/25	25/26	26/27	28/29	30/31	32/33
Sleeve length from shoulder	13 1/2	13 3/4	14	15	16	17 1/2	18 1/2	19 1/2
Shoulder Width	11 1/2	12	12 1/2	13	13 1/2	14	14 1/2	15
Length from CB	17 1/4	17 1/4	17 1/4	18 1/4	20 1/2	21 1/2	22 1/2	23 1/2



#CW113 Junior Pant



Fabric: Available in 65/35 Poly/Cotton

Buttons: Available in Dyed to Match & Tortoise shell

Sizes: XS- XL

Embroidery/Screenprinting: Yes

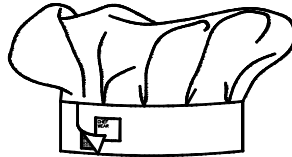
Custom Options: Please feel free to discuss with our sales team ...



Below Hip Measurements allow for 4-5" Ease					
	XS	S	M	L	XL
Waist	19	21	22	23	24
Hip	21	24	27	29	31
Front Rise	8 1/2	8 3/4	9	9 1/4	9 1/2
Back Rise	10 3/4	11	11 1/4	11 1/2	11 3/4
Crotch Depth	19	20 1/2	22	23	24
Length	19	20 1/2	22	23	24
Inseam	15 1/2	17	18 1/2	21.5	25



#CW52 Junior Hat



Fabric: Available in 65/35 Poly/Cotton

Sizes: S M L

Embroidery/Screenprinting: Yes

Custom Options: Please feel free to discuss with our sales team ...

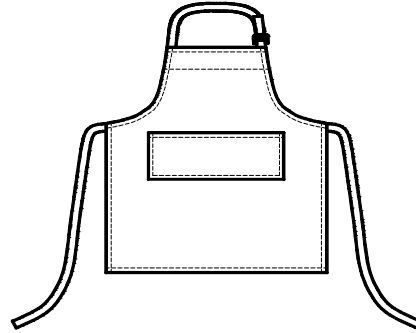


Below are the hat measurements ...

	S	M	L
Head Circumference	20 3/4	21 3/4	22 3/4



#CW114 - Junior Apron



Fabric: Available in 65/35 Poly/Cotton

Sizes: S- L

Embroidery/Screenprinting: Yes

Custom Options: Please feel free to discuss with our sales team ...



Small (3-6)	Medium(7-9)	Large(10-12)
13X18	16x20 1/2	18X24